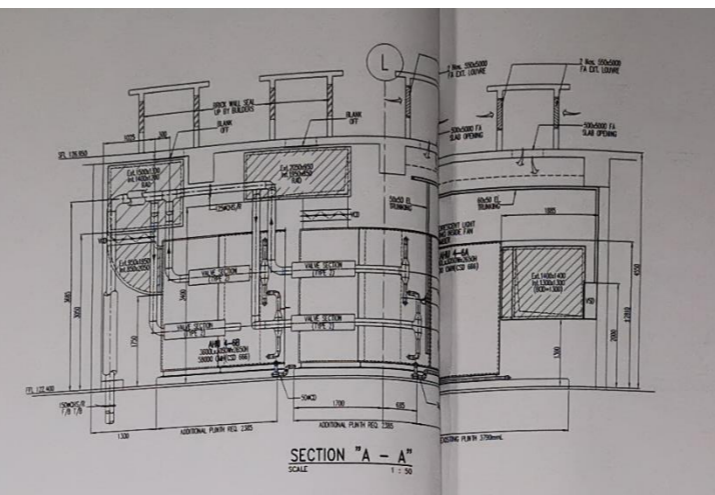
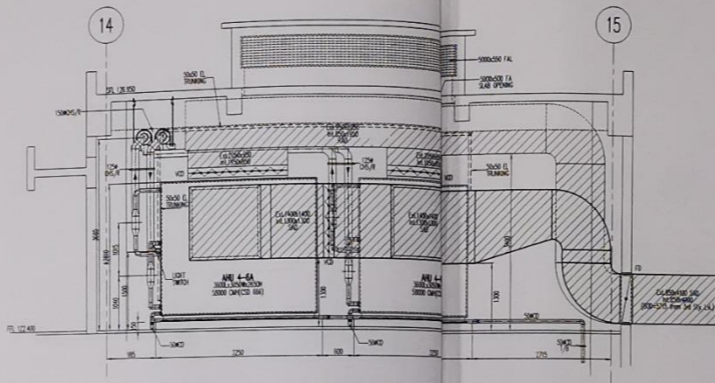


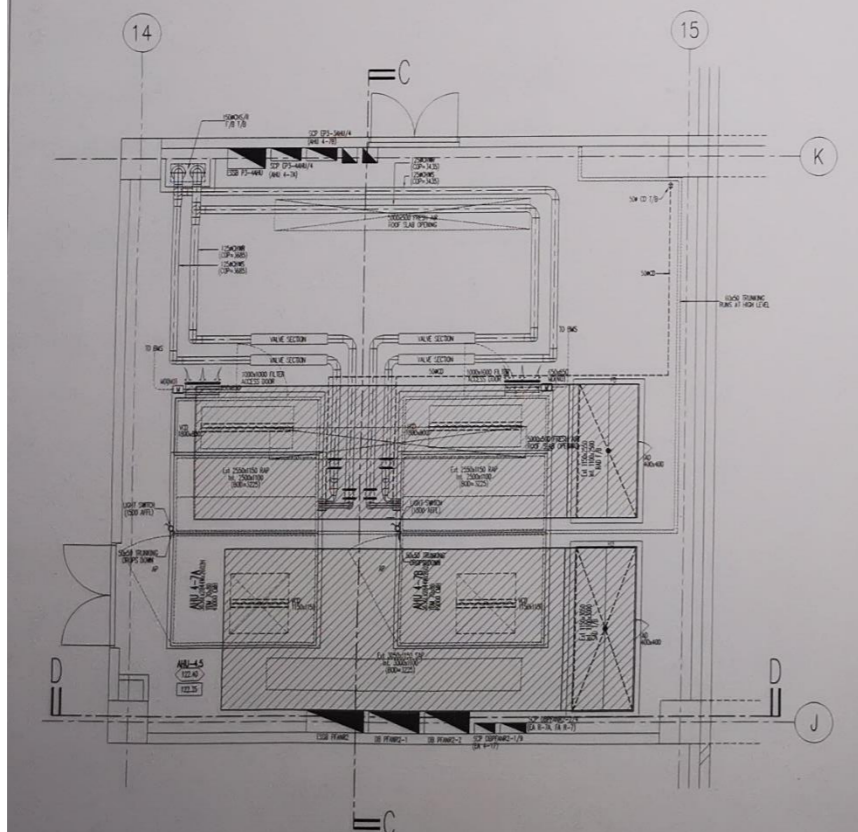
4TH STOREY PART PLAN, AHU ROOM 4.3  
AHU 4-6A & 4-6B (CONTROL: CAV TYPE 1)  
SCALE 1:50



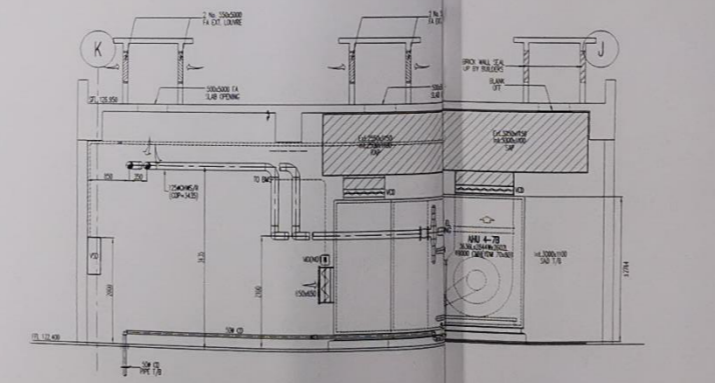
SECTION "A - A"  
SCALE 1:50



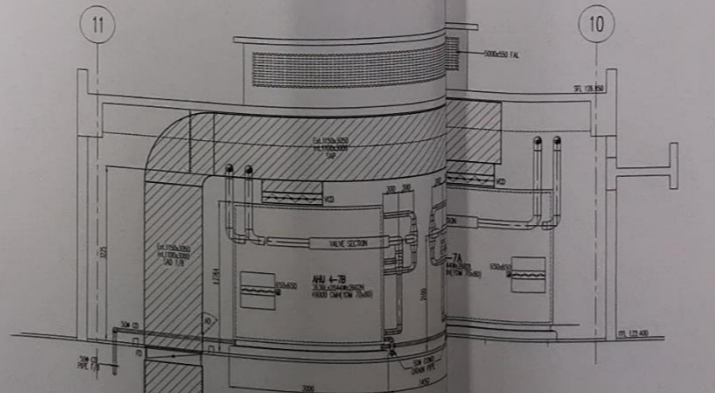
SECTION "B - B"  
SCALE 1:50



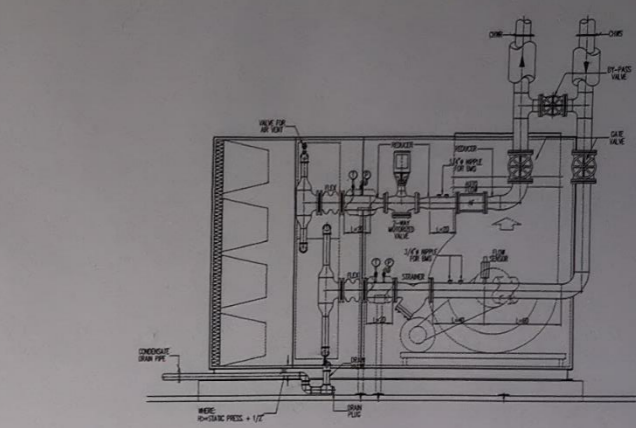
4TH STOREY PART PLAN, AHU ROOM 4.5  
AHU 4-7A & 4-7B (CONTROL: CAV TYPE 1)



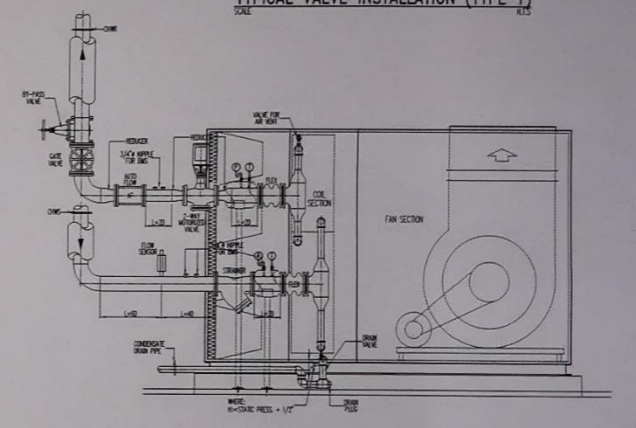
SECTION "C - C"  
SCALE 1:50



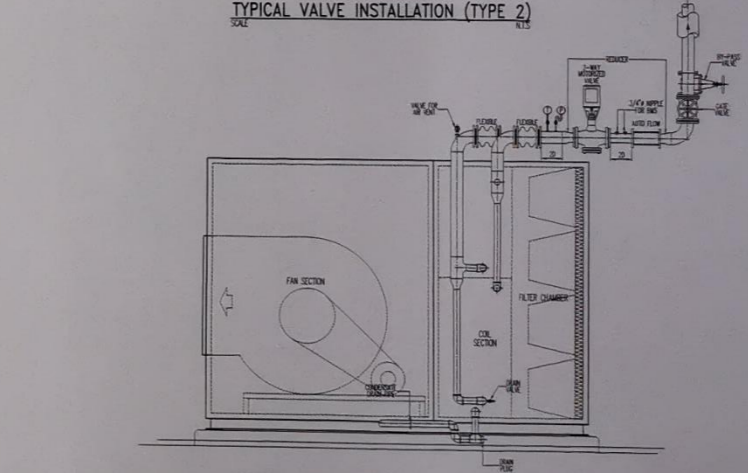
SECTION "D - D"  
SCALE 1:50



TYPICAL VALVE INSTALLATION (TYPE 1)  
SCALE 1:10



TYPICAL VALVE INSTALLATION (TYPE 2)  
SCALE 1:10



TYPICAL VALVE INSTALLATION (TYPE 3)  
SCALE 1:10

NOTE: FOR SUPPLY PIPE VALVE ARRANGEMENT REFER TYPE 1/TYPE 2

**AHU SCHEDULE**

UNIT NUMBER	AHU 4-6A/4-6B	AHU 6-7A/4-7B
MANUFACTURER	YORK	YORK
COUNTRY OF MANUFACTURE	MALAYSIA	MALAYSIA
MODEL NUMBER	CO2 666	FAN 7000
OVERALL DIMENSION (mm)	1800x1800x1000	1600x1600x1000
OPERATING WEIGHT (kg)	2480	1562
COOLING CAPACITY (kW)	175.55	142.85
AIR VOLUME (cm <sup>3</sup> /min)	50000	40000
FRESH AIR VOLUME (cm <sup>3</sup> /min)	11000	10000
TOTAL STATIC PRESSURE (Pa)	461	381.8
ELECTRICAL SUPPLY (V/Hz/Ph)	110V-415V-3-50	110V-415V-3-50
WATERING (METER)	30	18.5

**SCHEDULE OF VALVES FOR CHILLED WATER PIPES**

AHU NO.	PIPE SIZE (mm)	COIL PIPE OUTLET SIZE (mm)	COIL TYPE	VALVES						BMS CONTROL	
				AUTO FLOW	MODIFIED VALVE	GATE VALVE	STRAINER	BY-PASS	OF		
AHU 4-6A/4-6B	125	65	STACK	KS 100	100	VF41.80	80	125	125	100	CAV TYPE 1
AHU 4-7A/4-7B	125	65	STACK	KS 100	80	VF41.80	80	125	125	100	CAV TYPE 1

