

CW2109Q211

## Supply, Delivery and Installation of Digital Fuel Gauge

### Scope of works:

Supply, delivery and installation of digital fuel gauge at the following locations:

- 4 main tanks at SMC (above ground)
- 4 main tanks at ICC (underground)
- 6 bowsers (mobile tankers)

Vendors are advised to attend site show round to understand the system set-up and scope of works.

### Main tanks

Type: Digital
Measure: Diesel /Petrol
Measurement: Liters Range: 0 to 30000L
Accuracy: +/- 0.03%
Power rating: 240V (current building power supply)
Usage: External installation thus to withstand variable weather conditions (IP67)

### Bowsers

Type: Digital
Measure: Diesel
Measurement: Liters Range: 0 to 10000L
Accuracy: +/- 0.03%
Power rating: 24V (connected to truck battery supply)
Usage: External installation thus to withstand variable weather conditions and vibration (IP67)

- Fuel level sensor
- Temperature sensor (optional)
- Volume based on ambient temperature
- Field display at tanks/bowser trucks
- Installation works for the digital fuel gauge (M&E)
- Warranty period to be 2 years on-site warranty (inclusive of parts & labor)
- Calibration service every 6 months for 2 years.
- Provide data specification for products and the schematic diagram of set-up
- Commissioning & calibration test for all digital gauges installed

CW2109Q211

**Additional info**

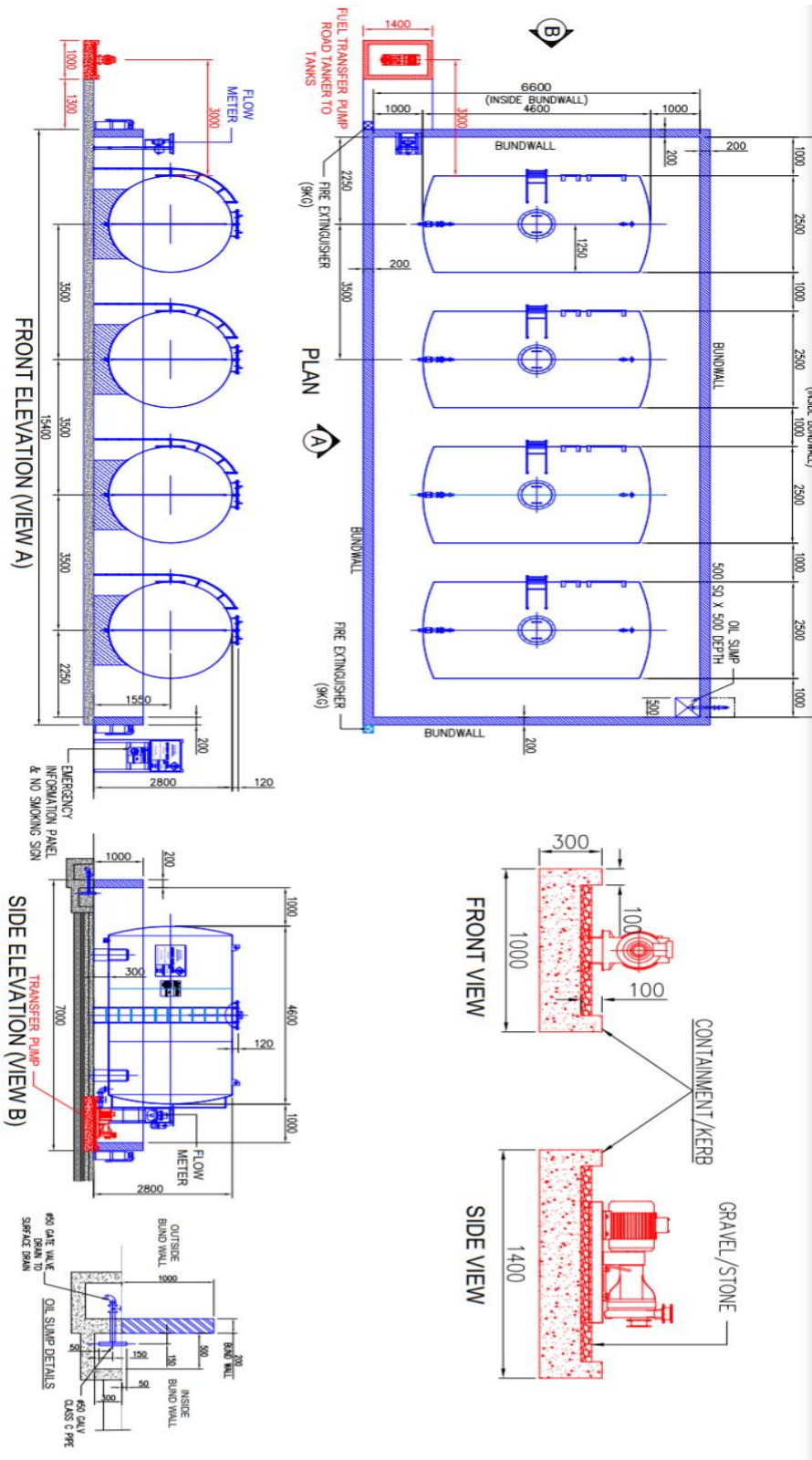
- SMC tanks (Horizontal)
  - o 2,500mm in diameter and 4600 length (20,000L)
- ICC tanks (Horizontal)
  - o 1,600mm in diameter and 4000 length (4000L)
  - o 1,800mm in diameter and 4000 length (8000L)
  - o 2,000mm in diameter and 4000 length (12,000L)
- Bowser tanks (Horizontal)
  - o 4000-6000L capacity
  
- Tank strapping table will be provided
- Installation of digital level gauge to be on existing provisioned fitting else alternative mounting location to be advised by vendor

**Pricing Table**

S/N	Item Description	Qty	Pricing (\$SGD)	Remarks
<b>1</b>	<b>Main tanks</b>	8		
	Supply & Delivery of digital fuel gauge			
	Installation & labor charges for main tanks @ SMC/ICC			
	Any additional cost (if applicable)			
<b>2</b>	<b>Bowsers</b>	6		
	Supply & Delivery of digital fuel gauge			
	Installation & labor charges for main tanks @ SMC/ICC			
	Any additional cost (if applicable)			

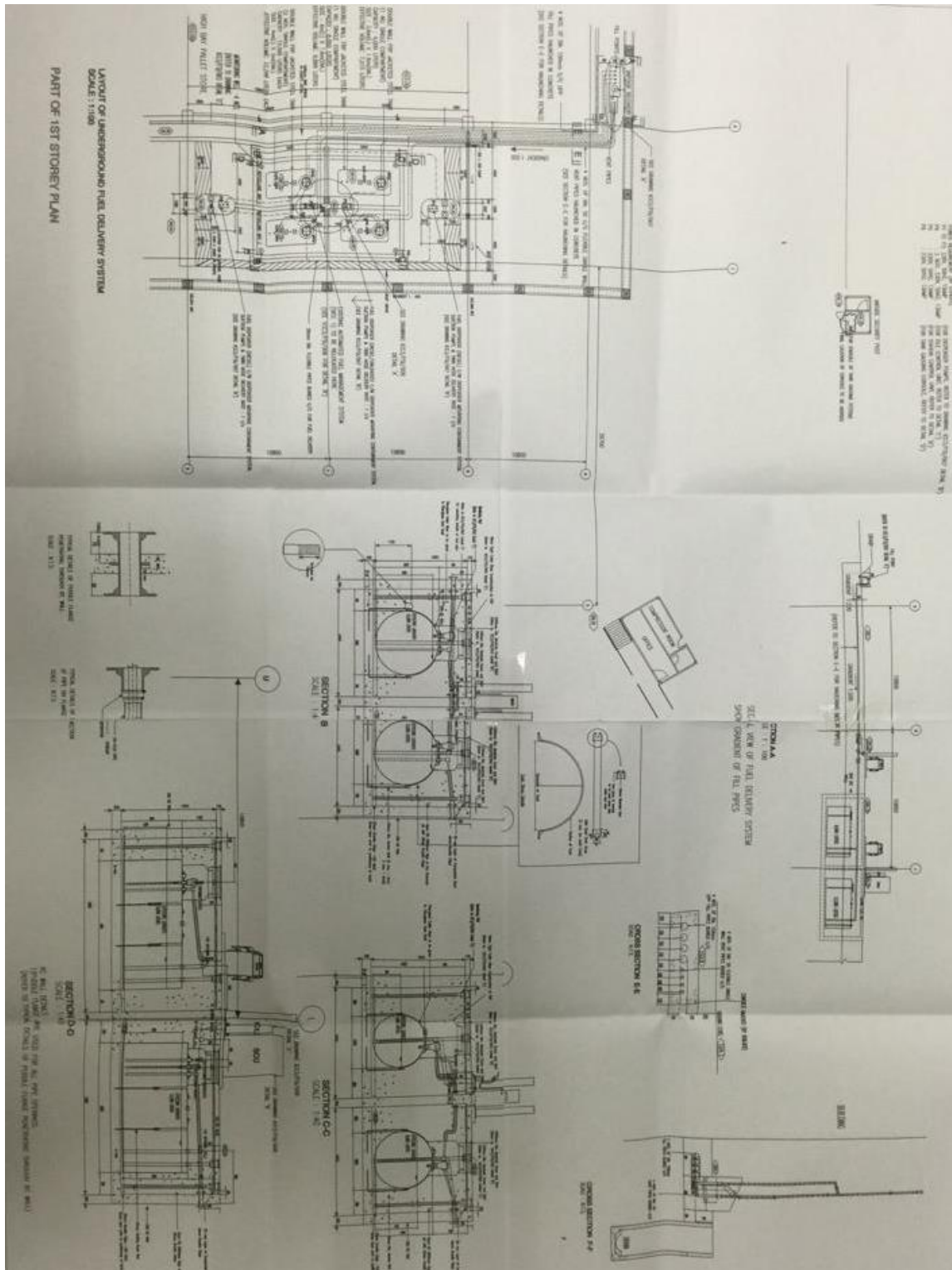
CW2109Q211

**SMC Main Tanks**



CW2109Q211

**ICC Underground Tanks**



CW2109Q211



Figure 1 Bowser



Figure 2 Bowser tank

CW2109Q211



*Figure 3 SMC main tanks*